



G3 Ultra System Process Chart

For High & Ultra High Solids Paint Systems

Remove Defect

Wet Use Sanding

- G Sand Denibbing **GSD320**
- Rose P2000
- G Sand Denibbing **GSA301**
- Block
- G Sand Waterproof **GSW115**
- Half Sheets P1500
- G Sand Waterproof **GSW120**
- Half Sheets P2000
- G Sand Flattening Block **GSA012**

Dry Use Sanding

- G Sand 75mm Abrasive **GSD712**
- Film Discs P1200
- G Sand 75mm Abrasive **GSD715**
- Film Discs P1500
- G Sand 75mm Abrasive **GSD720**
- Film Discs P2000
- G Sand 75mm Abrasive **GS3701**
- Foam Discs P3000
- G Sand 150mm Abrasive **GSD112**
- Film Discs P1200
- G Sand 150mm Abrasive **GSD115**
- Film Discs P1500
- G Sand 150mm Abrasive **GSD120**
- Film Discs P2000
- G Sand 150mm Abrasive **GS3101**
- Foam Discs P3000
- G Sand 150mm **GSA106**
- Interface Pad

1. Compounding



G3 Ultra
Premium Abrasive Compound



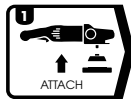
Product Size
500g
1kg

Codes
G3U501
G3U130

Applicators

- G Mop 3" Yellow Compounding Foam
- G Mop 6" Yellow Compounding Foam
- G Mop 8" Yellow Compounding Foam

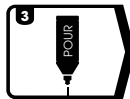
Codes
GMC312
GMC612
GMC812



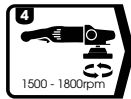
Attach a G Mop Yellow Compounding Foam to a polishing machine



Shake bottle well before use



Dispense a small quantity of product onto surface or pad



Compound at 1500 - 1800rpm



Wipe clean with a Finishing Cloth **FC-3** (3 x cloths)

Tip: Prior to first use of a new pad, roughen with a Spurring Brush (**1090005**) to ensure optimum results. Clean pad with the Spurring Brush after use.

2. Finishing



G3 Fine
Finishing Compound



Product Size
500g
1kg
1 US gallon

Codes
G3F501
G3F101
G3F118

Applicators

- G Mop 3" Finishing Foam
- G Mop 6" Finishing Foam
- G Mop 8" Finishing Foam

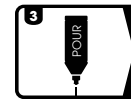
Codes
GMF301
GMF601
GMF801



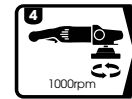
Attach a G Mop Finishing Foam to a polishing machine



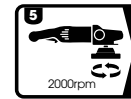
Shake bottle well before use



Dispense a small quantity of product onto surface or pad



Spread and start compounding at 1000rpm



Slowly increase speed to 2000rpm. **DO NOT ALLOW PRODUCT TO DRY**



Wipe clean with a Finishing Cloth **FC-3** (3 x cloths)

3. Protecting



OR



G3 Glaze
Gloss Enhancer



Product Size
500ml
1ltr
1 US gallon

Codes
G3G501
G3G101
G3G118

G3 Wax
Premium Liquid Protection



Product Size
500ml
1ltr
1 US gallon

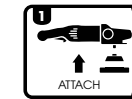
Codes
G3W501
G3W106
G3W118

Applicators for both products

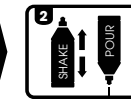
- G Mop 3" Finishing Foam
- G Mop 6" Finishing Foam
- G Mop 8" Finishing Foam
- Finishing Cloth (3 x cloths)

Codes
GMF301
GMF601
GMF801
FC-3

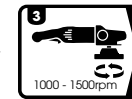
G3 Glaze - Primary Application by machine



Attach a G Mop Finishing Foam to a machine



Shake bottle well and apply a small quantity to pad or surface

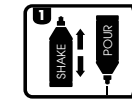


Compound at 1000 - 1500rpm



Wipe clean with a Finishing Cloth **FC-3** (3 x cloths)

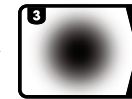
G3 Wax - Primary Application by hand



Shake bottle well and apply a small quantity to the surface



Rub the product in a circular motion onto the surface with a cloth



Allow to dry to a haze



Wipe clean with a Finishing Cloth **FC-3** (3 x cloths)